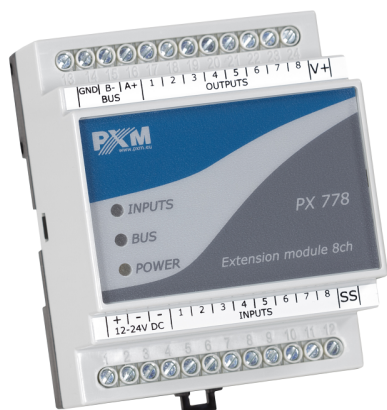


## Extension module 8ch



## Device description

PX778 is a device dedicated to work with PX340 / PX340+ and PX710 / PX710+ controllers, in which it is possible to connect of additional inputs for the controllers.

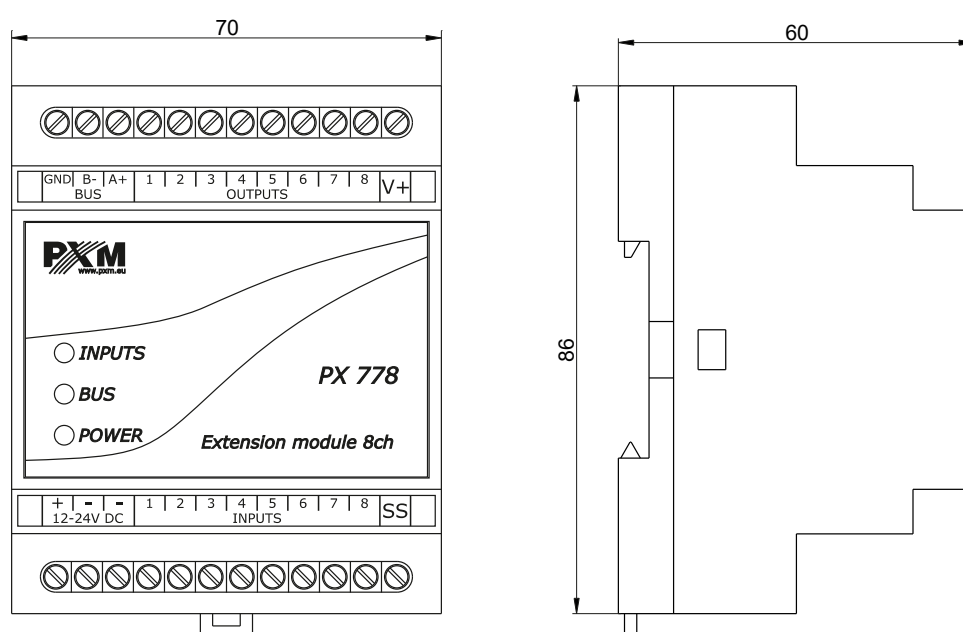
Extension module 8ch expands the system by 8 digital inputs, this device is connected to the controller using a connector, which is the PX725 Keyboard Hub. The PX725 Keyboard Hub is not required when connected to the PX340+ / PX710+ controller. It is possible to connect 64 devices (max. 32 per one line) and they should be connected in series.

The digital inputs can be of the sink in type – “*joint plus*” or the source in type – “*joint mass*”, depending on the configuration of the SS input connection (“-” or “+”). In addition, the device has 8 OC outputs, to which signaling diodes can be connected. Each output has a 10-degree scale of the brightness level with a maximum load of up to 150mA.

Each of the inputs and outputs in PX778 can be configured using the PxDesigner application (available for free download from the manufacturer’s website).

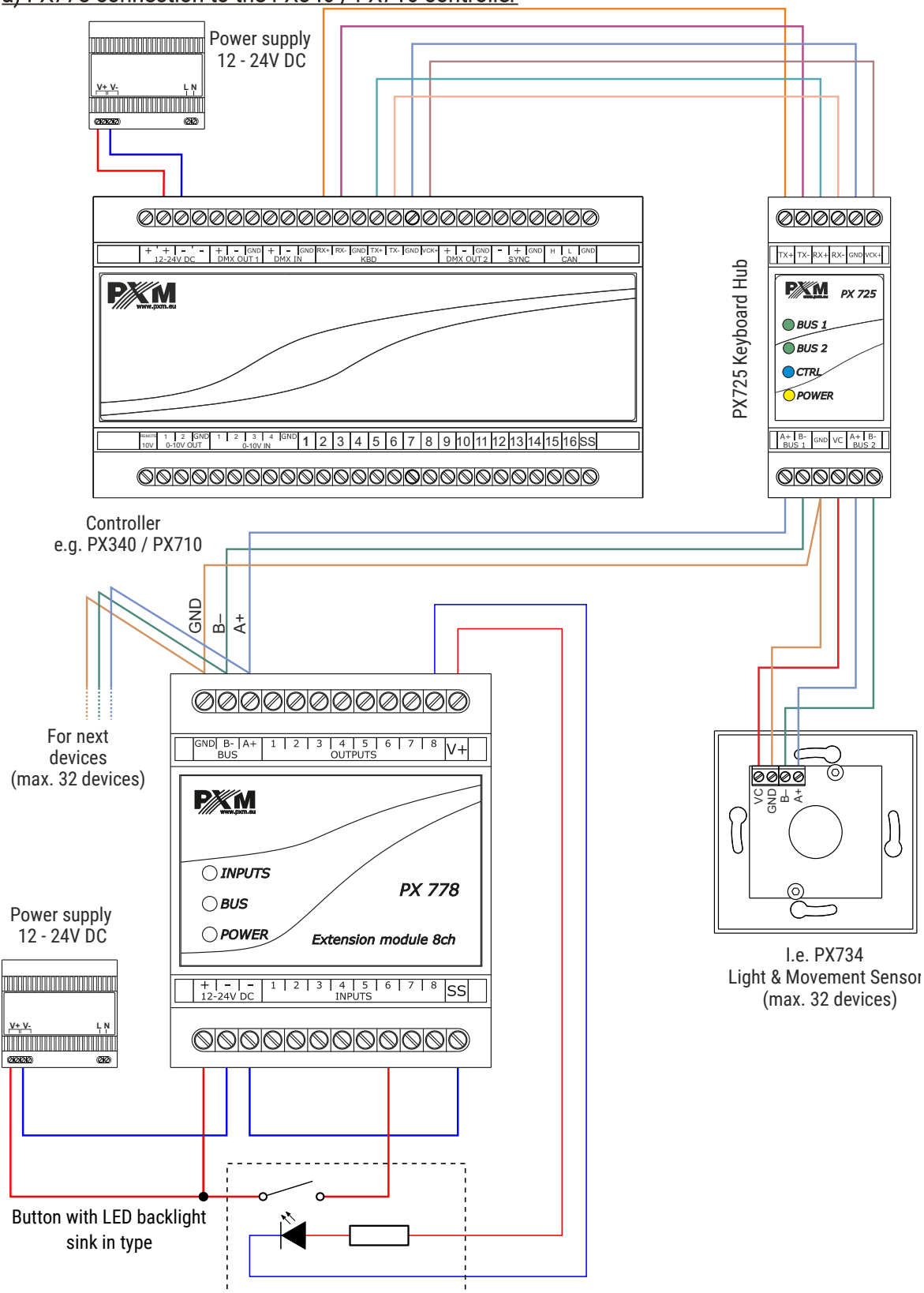
The device is enclosed in a housing adapted for mounting on a standard 35mm DIN rail and can be supplied with 12 – 24V DC.

## Technical drawing

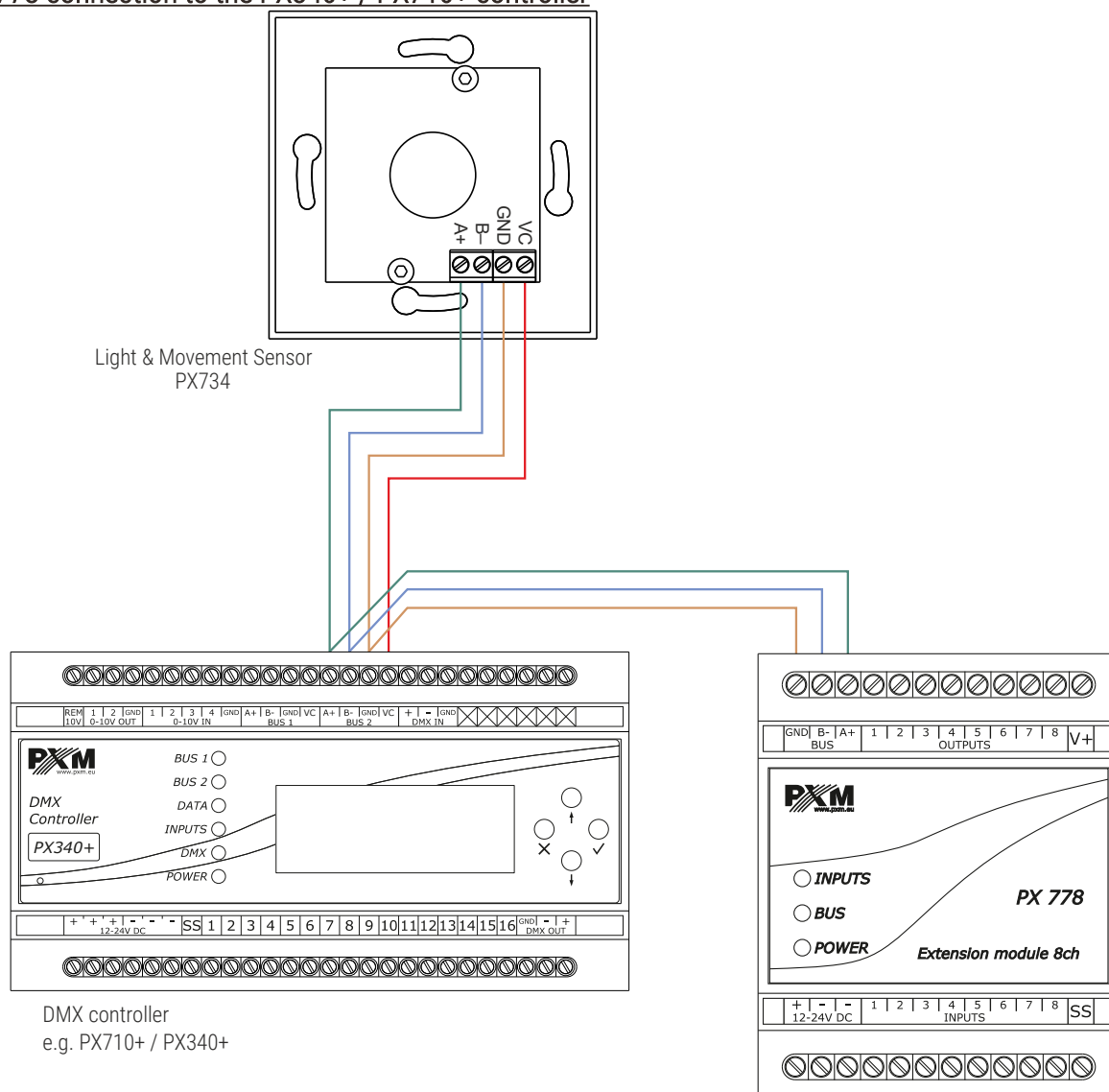


## Connection diagram

### a) PX778 connection to the PX340 / PX710 controller



## b) PX778 connection to the PX340+ / PX710+ controller



## Technical data

---

type	PX778
power supply	12 – 24V DC
cooperation with the controllers	PX340, PX710, PX340+, PX710+
method of programming	with the use of PxDesigner
max. power consumption	2W
output load capacity	max. 150mA / output
weight	0.1kg
dimensions	width: 70mm height: 86mm depth: 60mm